

## Rheb-GTP

**Catalog Number:** 26910

**Gene Symbol:** RHEB

**Description:** Anti-Rheb-GTP Mouse Monoclonal Antibody

**Background:** Small GTPases are a super-family of cellular signaling regulators. Rheb is a member of the Ras-superfamily GTPases. Rheb has been shown to interact with C-Raf, Mammalian target of rapamycin (mTOR), TSC2, Ataxia telangiectasia mutated (ATM), KIAA1303 and Ataxia telangiectasia and Rad3 related (ATR).

**Immunogen:** Recombinant full-length protein of active Rheb

**Tested Applications:** IP, IF, IHC

**Recommended Dilutions:**

IP: 1 µg for 1~2 mg total cellular proteins

IF, IHC: 1:100-1:500

**Concentration:** 1 mg/ml

**Host:** Mouse

**Clonality:** Monoclonal

**Isotype:** IgM

**Purity:** Purified from ascites

**Format:** Liquid

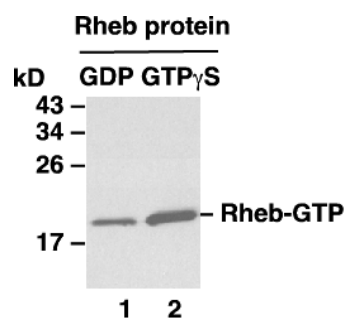
**Preservative:** No

**Constituents:** PBS (without Mg<sup>2+</sup> and Ca<sup>2+</sup>), pH 7.4, 150 mM NaCl, 50% glycerol

**Species Reactivity:** Anti-Rheb-GTP antibody recognizes active Rheb of vertebrates

**Storage Conditions:** Store at -20°C. Avoid repeated freezing and thawing

## Immunoprecipitation/Western blot



**IP:** anti-active Rheb mAb

**WB:** anti-Rheb pAb

## Rheb Activation Assay.

Purified Rheb proteins were immunoprecipitated after treated with GDP (lane 1) or GTP<sub>γ</sub>S (lane 2). Immunoprecipitation was done with the anti-Rheb-GTP monoclonal antibody (Cat. # 26910). Immunoblot was with anti-Rheb rabbit polyclonal antibody (Cat. # 21098).

FOR RESEARCH USE ONLY. NOT FOR DIAGNOSTIC APPLICATIONS